



UD – D-POLYON™ WHEELS



- Donut pattern tread
- Precision bearings as standard
- Blue color
- Durometer: Shore D 65 (+/-5)
- Temperature range: -40°F to 180°F

| BEARINGS | | |
|----------|------------------------------|------------|
| Code | Type | Bore I. D. |
| 63 | PRECISION BEARING W/TOP HATS | 1/2 |
| 64 | | 1/2 |

| Wheel Diameter | Tread Width | Hub Length | Load Capacity | Part # | Precision BB |
|----------------|-------------|------------|---------------|-----------------------------------|--------------|
| | | | | <i>Replace + with Color Code.</i> | |
| 6 | 2 | 2-7/16 | 1000 | UD60JL64 | 64 |
| 8 | | | 1200 | UD80JL64 | 64 |

UX – SUPER ELASTOMER (ULTRAFLEX™) WHEELS

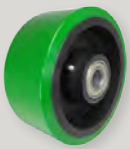
NEW

- Ultraflex is uniquely formulated for best ergonomic push/pull after set and in-line operation
- Extra thick PU tread for best cushioning ride
- Yellow as standard color
- Durometer: Shore A 80-85

| Wheel Diameter | Tread Width | Hub Length | Load Capacity | Part # | Color Code | Precision BB |
|----------------|-------------|------------|---------------|-----------------------------------|------------|--------------|
| | | | | <i>Replace + with Color Code.</i> | | |
| 4 | 2 | 2-7/16 | 900 | UX40J063 | YELLOW | 63 |
| 5 | | | | UX50J064 | | 64 |
| 6 | | | | UX60J064 | | 64 |
| 8 | | | | UX80J064 | | 64 |

| BEARINGS | | |
|----------|------------------------------|------------|
| Code | Type | Bore I. D. |
| 63 | PRECISION BEARING W/TOP HATS | 1/2 |
| 64 | PRECISION BEARING W/TOP HATS | 1/2 |

EX – ULTRA-POLY® WHEELS



- 3/4" thick PU on heavy duty cast iron core for higher load capacity with longer life
- Variety of bearing options for optional performance at different application
- Durometer: Shore D 60 (+/-5)
- Temperature range: -40°F to 180°F

| Wheel Diameter | Tread Width | Hub Length | Load Capacity | Part Number | <i>Replace** with desired Bearing Code.</i> | | | | |
|----------------|-------------|------------|---------------|-------------|---|----------------|--------------|-----------------|----------------|
| | | | | | Plain Bore | Roller Bearing | Precision BB | Tapered Bearing | Bronze Bearing |
| 6 | 3 | 3-1/4 | 3000 | EX60LG** | 85 | 24, 26 | 65, 67 | 70, 71 | B8 |
| 8 | | | 3500 | EX80LG** | 85 | 24, 26 | 65, 67 | 70, 71 | B8 |
| 10 | 4 | 4-1/4 | 4000 | EX80NG** | 86 | 31, 33 | 68 | 71, 74 | |
| | 3 | 3-1/4 | 4000 | EX10LG** | 85 | 24, 26 | 65, 67 | 70, 71 | B8 |
| 12 | 4 | 4-1/4 | 5500 | EX10NG** | 86 | 31, 33 | 68 | 71, 74 | |
| | 3 | 3-1/4 | 5000 | EX12LG** | 85 | 24, 26 | 65, 67 | 70, 71 | B8 |
| | 4 | 4-1/4 | 6500 | EX12NG** | 86 | 31, 33 | 68 | 71, 74 | |

| BEARINGS | | | | | |
|----------|--|------------|------|--|------------|
| Code | Type | Bore I. D. | Code | Type | Bore I. D. |
| 85 | PLAIN BORE | 1-15/16 | 67 | SEALED PRECISION BALL BEARING W/TOP HATS | 1 |
| 24 | ROLLER BEARING | 1 | 68 | 6205-1 | 1 |
| 26 | | | 70 | | 3/4 |
| 31 | | 1-1/4 | 71 | TAPER BEARING | 1 |
| 33 | | 1-1/2 | 74 | | 1-1/4 |
| 65 | SEALED PRECISION BALL BEARING W/TOP HATS | 3/4 | B8 | 1-PC BRONZE BEARING, PART # BRBRG78 | 1 |