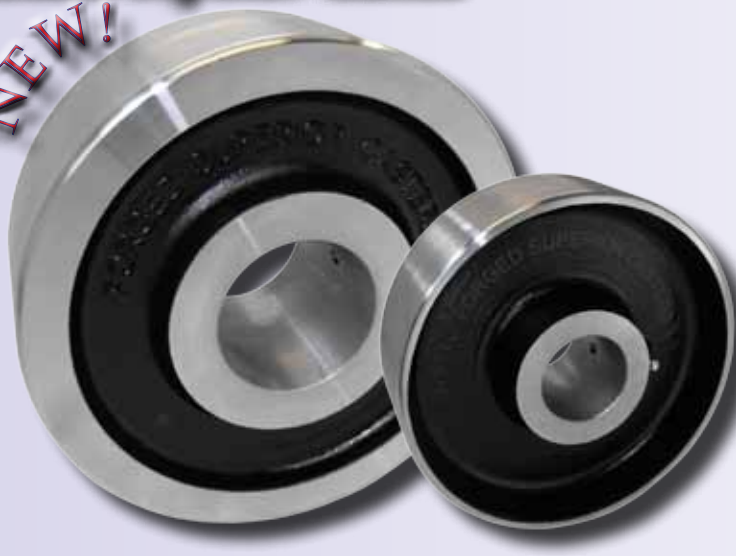


# Wheels: DROP FORGED STEEL



Durable Superior Casters®

**NEW!**



- ASTM 1045 high carbon steel is hot drop forged to improve grain structure of the wheel, enhancing ductibility and tensile strength. This is the ultimate extreme duty wheel.
- Offers the maximum weight capacity, impact strength, durability and roll-ability of all our wheels.
- Tread face is precisely machined for a smooth, central ride, tread edge is machined round.
- Precision & tapered bearings maximize mobility and performance in towing and severe use environments.
- Hardness: Rockwell 80 B
- Tensile strength of 60,000 PSI.
- Temperature range: Up to 1,300° F.

**\*Machined Solid Steel Straight Sided 4 x 2 Wheel.**



Wheel Diameter	Tread Width	Hub Length	Load Capacity	Part Number	Replace ** with desired bearing code.		
					Plain Bore	Roller Bearings	Tapered Bearings
*4	2	2-3/16	2500	MS40JS**	84	09	
6	2	2-3/16	2500	FS60JS**	84	02,04,09,92	73
6	2-1/2	2-3/4	4000	FS60QS**	85	24,26	
6	2-1/2	2-3/4	8000	FS60QS**			70,71
6	3	3-1/4	8000	FS60LS**	86	27	
6	3	3-1/4	11000	FS60LS**			70,71,79
8	2	2-3/16	3000	FS80JS**	84	02,04,09,92	73
8	2-1/2	2-3/4	5500	FS80QS**	85	24,26	
8	2-1/2	2-3/4	11000	FS80QS**			70,71
8	3	3-1/4	8000	FS80LS**	86	27	
8	3	3-1/4	11000	FS80LS**			70,71,79
8	4	4-1/4	11000	FS80NS**	86	33	
8	4	4-1/4	18000	FS80NS74			74
10	3	3-1/4	8000	FS10LS**	86	27	
10	3	3-1/4	11000	FS10LS**			70,71,79
10	4	4-1/4	11000	FS10NS**	86	33	
10	4	4-1/4	20000	FS10NS74			74
12	3	3-1/4	8000	FS12LS**	86	27	
12	3	3-1/4	11000	FS12LS**	86		70,71,79
12	4	4-1/4	11000	FS12NS**	86	33	
12	4	4-1/4	20000	FS12NS74			74

Bore & Bearing Sizes																		
Bearing Code	02	04	09	24	26	27	33	63	65	70	71	73	74	79	84	85	86	92
Bearing or Bore Type	Roller Bearings		Caged Roller Bearing	Roller Bearings			Sealed Precision BB		Tapered Roller Bearings w/ Top Hat Bushings					Plain Bore			3/4 Roller w/Bushings	
Inner Diameter	5/8	3/4	3/4	1	1-1/4		1-1/2	1/2	3/4	3/4	1	1/2	1-1/4	3/4	1-3/16	1-15/16	2-7/16	1/2

# Wheels: SINTERED IRON



- Sintered Iron wheels are made from super compressing powdered iron into wheel molds that offer a strong, durable, attractive looking, cost effective solution for light-medium duty loads.
- Hard tread rolls easily and offers high abrasion resistance.
- Tread face is precisely machined for a smooth, concentric surface, tread edge is machined round.
- Hardness: Brinell 145
- Temperature range: -40° F to 500° F.

Wheel Diameter	Tread Width	Hub Length	Load Capacity	Part Number	Plain Bore	Bore I.D.
2	7/8	1	200	SI20CS80	80	1/4
2.5	1	1-3/8	250	SI25DS81	81	5/16
3	1-1/4	1-9/16	300	SI30GS82	82	3/8
4	1-1/2	1-15/16	400	SI40HS83	83	1/2