



CASTER CITY

8635 Bright Angel Way
Las Vegas, NV 89149
800-501-3808

PART NO:

REVISIONS:

DATE	#	COMMENT	BY

Stainless Steel Model 9 - 6" Swivel

DIMENSIONS AND TOLERANCE ARE IN INCHES UNLESS SPECIFIED:

.X ± 0.1 .XX ± 0.06 .XXX ± 0.03 FRACTION $\pm 1/16$ ANGLES $\pm 1^\circ$

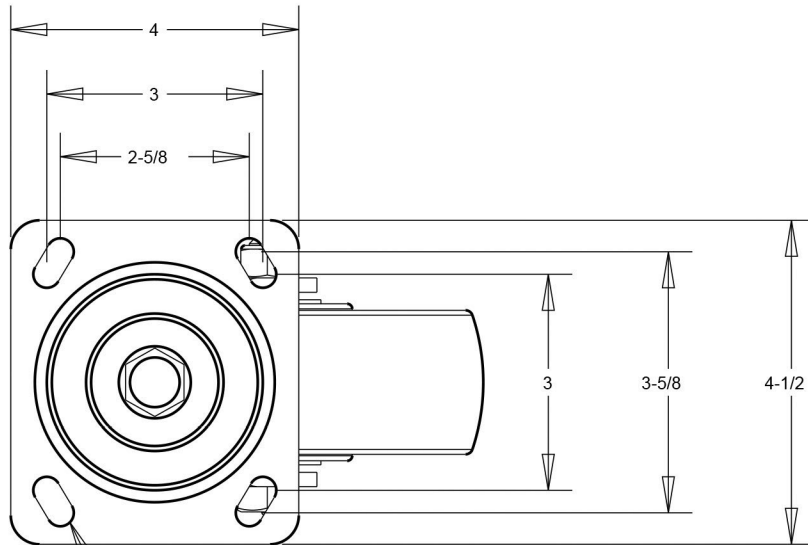
SPECIFICATIONS:

YOKE:

1. MATERIAL **304 Stainless Steel**
2. DOUBLE BALL BEARING RACEWAYS
3. 5/8" KINGPIN AND NUT
4. GREASE FITTING IN SWIVE RACEWAY
5. 1/2" ZERK AXLE AND NUT

DATE	02/27/2017
SCALE	
PAGE	1 OF 1
DRAWN BY	E.T.
APPROVED BY	S.C.

Capacity up to 900lbs depending on the wheel



MOUNTING BOLT $\varnothing 3/8$

